

## Standard Capacity Station (SC5.5)

Bigbelly's SC5.5 is a smart, fullness-sensing waste station. This non-compacting model is equipped with sensors that monitor and report fullness levels and collection activity. It is battery powered to communicate its real-time status. The SC5.5 has an enclosed flap option for total waste containment. It is ideally placed in lower waste volume areas, among a fleet of customized station configurations. This model maintains the durable, high quality and design integrity of all Bigbelly smart stations, and can be customized based on waste stream, options, and accessories.



50 GALLON  
CAPACITY



BATTERY  
POWERED



SMART  
STATION



FULLNESS  
SENSING

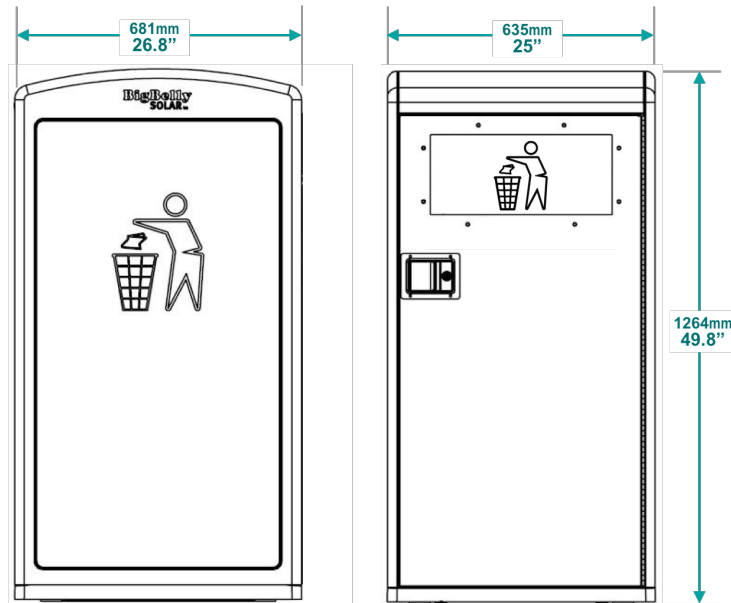


ONBOARD  
GPS



CELLULAR  
CONNECTION

## Technical Specifications



### Overall Machine Dimensions

- Height: 49.8" (1264 mm)
- Width: 25" (635 mm)
- Depth: 26.8" (681 mm)
- Handle Height (ADA Compliant): 43.1" (1095 mm)
- Weight: 150 lbs (68 kg)
- Shipping weight: 180 lbs (82 kg)
- Insertion Opening: Can be configured for variety of recycling / waste streams.
- Bin Volume: 189 L
- Standard Interior Bin Dimension: 25" x 20" x 32.25" (635 mm x 508 mm x 819 mm)

**Waste Streams:** Mixed Waste Trash, Single Stream / Paper / Bottles & Cans Recycling, or Compost / Organics (with appropriate markings).

**Options:** See options and accessories on next page.

## Standard Capacity Station (SC5.5)

*Smart, Battery-Powered,  
Non-Compacting Model  
(190 L)*



**Bigbelly**  
SMART CITY SOLUTIONS

www.futurestreet.com | info@futurestreet.com  
+(353) 1 513 4836 | © 2019 Bigbelly, Inc.

Future Street is the Bigbelly authorised licensee in 63 countries.

## Standard Capacity Station (SC5.5)

Smart, Battery-Powered,  
Non-Compacting Model  
(190 L)



www.futurestreet.com | info@futurestreet.com  
+(353) 1 513 4836 | © 2019 Bigbelly, Inc.

Future Street is the Bigbelly authorised licensee in 63 countries.

## Technical Specifications - Continued

### SC5.5 Features

- Fully automated, microprocessor controlled system senses fullness and machine status
- Embedded sensors measure station fullness level (ultrasonic sensor) and collection activity
- 3G GSM or 4G LTE wireless data link for remote monitoring and management
- GPS assisted location service
- 'Companion' model is also available to couple with either an HC5 or SC5.5 'Hub'
  - Note: Companion models use the power and communication source of their attached hub

### Safety Features

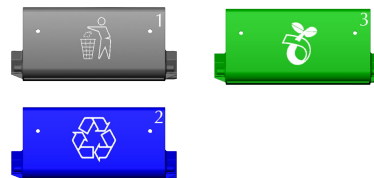
- CE approved
- Locked front door accessed via key by collection and service personnel

### Durability

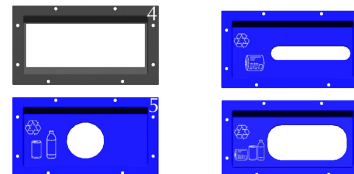
- Weather resistant, UV stabilized polyester powder-coat finish on all exterior metal parts
- Electronic components temperature range of -40°F to +185°F (-40°C to +85°C)
- Fully weatherized, but in the event of a flood, the component can withstand up to 40" (1.06 m) of water without harming electronics

### Opening Options

Hopper Options



Faceplate Options



PLEASE NOTE: Green Hoppers, Faceplates or Flaps require additional 6 weeks to process.

### Materials

- RoHS compliant
- Galvanized sheet metal steel interior and exterior construction
- Heavy duty plastic side panels and top for dent and scratch resistance (recycled content)
- Interior Bin: Leak proof; made of low density polyethylene (LDPE) plastic

### Power & Electronics

- Single-use Alkaline battery pack
- Battery life: Up to 8 years
- Self-powered unit requires no wiring
- Cordless operation for both indoor / outdoor use

### Options & Accessories

- Graphic Wraps, Message Panels, Stickers
- Security System with Physical Plates